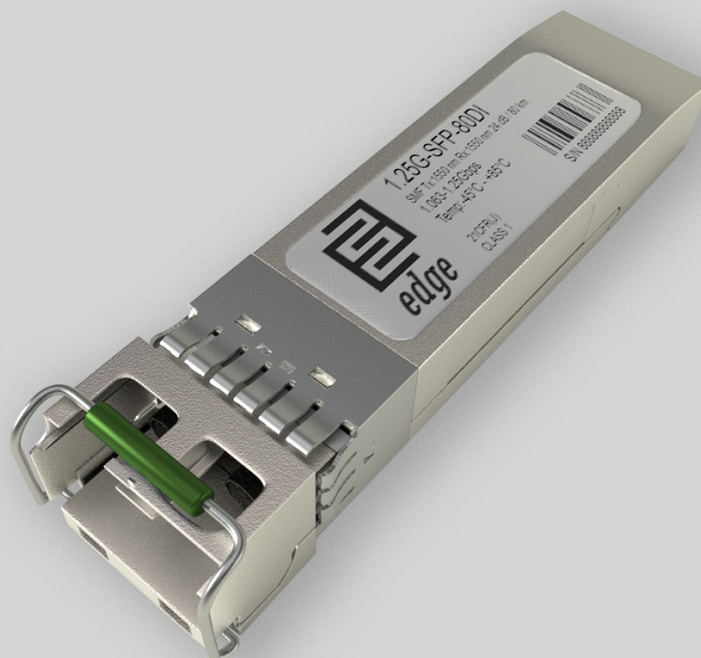


## Key Highlights:

- **Type:** SFP
- **Compatibility:** Multi-Vendor MSA Compatible
- **Tx Wavelength:** 1550 nm.
- **Rx Wavelength:** 1550 nm.
- **Media Type:** Single-Mode Fiber (SMF)
- **Optical Budget:** 24 dB
- **Max. Distance:** 80 km
- **Data Rate:** 1.063-1.25Gbps
- **Temperature:** Industrial -45°C - +85°C



## Optical Transceiver: 1.25G-SFP-80DI

### Product Description:

1.25G-SFP-80DI is Multi-Vendor MSA Compatible SFP (Small Form factor Pluggable) Transceiver, operating over Double Fiber Single-Mode Fiber (SMF) optical cable. It has minimum guaranteed optical budget of 24 dB, with in most cases is enough to reach about 80 km distance. However, distance is just indicative parameter calculated for comfort of identification. Eventually we calculate distance taking in account minimal optical budget and average attenuation of optical cabling in industry. This transceiver use top quality DFB Laser transmitter with operating at nominal wavelength 1550 nm. and 1550 nm. PIN Photodiode receiver. It support DDM/DOM optical diagnostics, with provide diagnostic information about the present operating conditions. 1.25G-SFP-80DI operates in Industrial -45°C - +85°C temperature range and has Double LC interface. SFP support 1.063-1.25Gbps data rate and such applications as Gigabit Ethernet (1.25 Gbps)|1G Fiber Channel (1.0625 Gbps). 1.25G-SFP-80DI SFP Double Fiber optical transceiver is multi-purpose module used in number of different places of today's networking. Consequently, most popular applications are Gigabit Ethernet communication links in extreme industrial environment, Enterprise LAN & SAN Networks with high or low environment temperature demand Data Center LAN & SAN Networks and other optical links.

Transceiver is CE/RoHS certified and it is Compliant with product safety standards. 1.25G-SFP-80DI SFP Transceiver is fully compliant to SFP Multi Source Agreement INF-8074i. Consequently, it means that module is compatible with 80% of networking equipment, where is not implemented a special algorithm for protection against third party modules. However – we can provide SFP transceiver with custom-encoded firmware in order to make it work almost in any equipment. Therefore, we will be glad to know what your requirement is. Because our focus is providing top quality service, we are performing serious quality checks before delivery of our products. As a result, we do optical parameter measurements, connector cleanliness tests and SFP transceiver EEPROM memory data validation tests.



## Product Specification:

Parameter	Value
Media Type:	Single-Mode Fiber (SMF)
Tx Wavelength:	1550 nm.
Rx Wavelength:	1550 nm.
Minimum Optical Budget:	24 dB
Maximum Distance:	80 km
Supported Data Rate:	1.063-1.25Gbps
Supported Applications:	Gigabit Ethernet (1.25 Gbps) 1G Fiber Channel (1.0625 Gbps)
DDM/DOM:	Support
Temperature Range:	Industrial -45°C - +85°C
Connectors:	Double LC
Tx Wavelength Bandwidth:	37 nm (1528-1565 nm)
Rx Wavelength Bandwidth:	37 nm (1528-1565 nm)
Minimum Transmitting Power:	0 dB
Maximum Transmitting Power:	5 dB
Receiver Sensitivity:	-24 dBm
Receiver Overload:	-3 dBm
Dispersion:	1600 ps/nm
Transmitter Type:	DFB Laser
Receiver Type:	PIN Photodiode
Sidemode Suppression Ratio:	35 dB
Max. Receiver Reflectance:	- 12 dB
Power:	+3.3V single power supply
Power Consumption:	150mA
MTBF value at 35 °C:	1'000'000 Hours.
Chip-set:	MAXIM MINDSPEED SEMTECH
Compliance:	CE Class 1 FDA and IEC60825-1 Laser Safety Compliant RoHS INF-8074i SFP MSA



## Compatibility:

EDGE Optical transceivers can be provided with custom-encoded firmware, in order to provide compatibility with more than 50 vendor brands in data and telecom communications industry:

**MS** - General MSA  
**AD** - ADVA  
**AL** - Alcatel-Lucent  
**AR** - Arista  
**AV** - Avaya  
**BR** - Brocade  
**CN** - Ciena  
**CI** - Cisco  
**DL** - Dell & Force10  
**DK** - D-Link  
**EM** - EMC2  
**ET** - Enterasys

**ER** - Ericsson  
**EX** - Extreme Networks  
**F5** - F5 Networks  
**FO** - Fortinet  
**FU** - Fujitsu  
**H3** - H3C  
**HI** - Hirschmann  
**HP\*** - HP Networking  
**HS\*** - HP Storage  
**HU** - Huawei  
**IB** - IBM  
**IF** - Infinera

**IN** - Intel  
**JU** - Juniper Networks  
**LI** - Linksys  
**ML** - Mellanox  
**ME** - Meraki (Cisco)  
**MT** - MikroTik  
**MO** - Moxa  
**MR** - MRV  
**NG** - Netgear  
**NS** - NSN  
**PA** - Palo Alto Network  
**QL** - Qlogic

**RD** - RAD  
**RU** - Ruijie Networks  
**SM** - Supermicro  
**SY** - Synology  
**TC** - Telco Systems  
**TP** - TP-LINK  
**TN** - Trendnet  
**WG** - WatchGuard  
**ZT** - ZTE  
**XX** - Other

## Warranty:

EDGE Optic's provides a limited **warranty for sixty (60) months** from Purchaser's receipt of the Equipment represented in this data sheet against defective design or workmanship.

