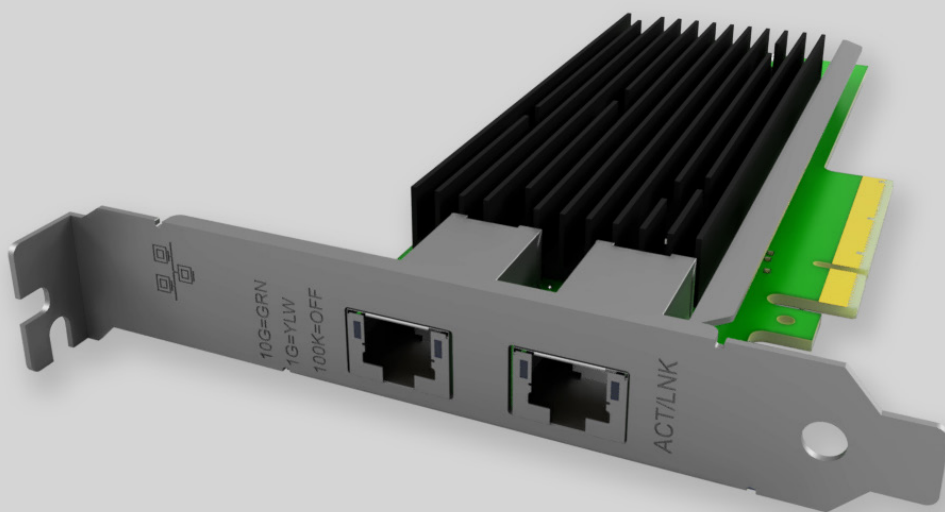


## Key Highlights:

- **NIC Category:** Dual Port 10G Copper RJ-45 PCIe
- **Controller:** Intel® X540
- **System Interface Type:** PCIe v2.1 x8 (5GT/s or 2.5GT/s)
- **Ports:** 2x10G RJ-45
- **Data rate per port:** 10/1GbE and 100Mb
- **Network Operating Systems (NOS):** Windows 64-bit, Linux, FreeBSD
- **Management:** Intel® PROSet Utility
- **Performance:** Load balancing on multiple CPUs
- **Unified Networking:** iSCSI, FCoE, NFS
- **Cables support:** RJ-45 CAT 6 (55m) and CAT 6A (100m)
- **Bracket Height:** Low Profile & Full Height



## Network Interface Card: 10G-NIC-X540-2T

### Product Description:

EDGE Optic 10G-NIC-X540-2T is Dual Port 10 Gigabit Ethernet Copper RJ-45 PCI-Express Network Interface Card which is based on Intel® X540 Chipset.

10G-NIC-X540-2T card with use of it's load balancing functions provides superior performance on multi-core processor servers and can offer leading network virtualization features, several remote boot options and wide manageability features. 10G-NIC-X540-2T has integrated MAC+PHY Single-Chip solution which translates into low power consumption. With it's auto negotiation features between 10GbE/1GbE/100Mb card gives users great flexibility in network design. This card provides as well flexibility for LAN and SAN networking by FCoE, iSCSI, protocol support.

10G-NIC-X540-2T can run on most network operating systems and can be used as a compatible alternative for Intel, HPE, Dell, Lenovo, IBM, Cisco, Broadcom, Marvel, Qlogic, Emulex, Mellanox, Supermicro and many other brand Network Interface Cards.

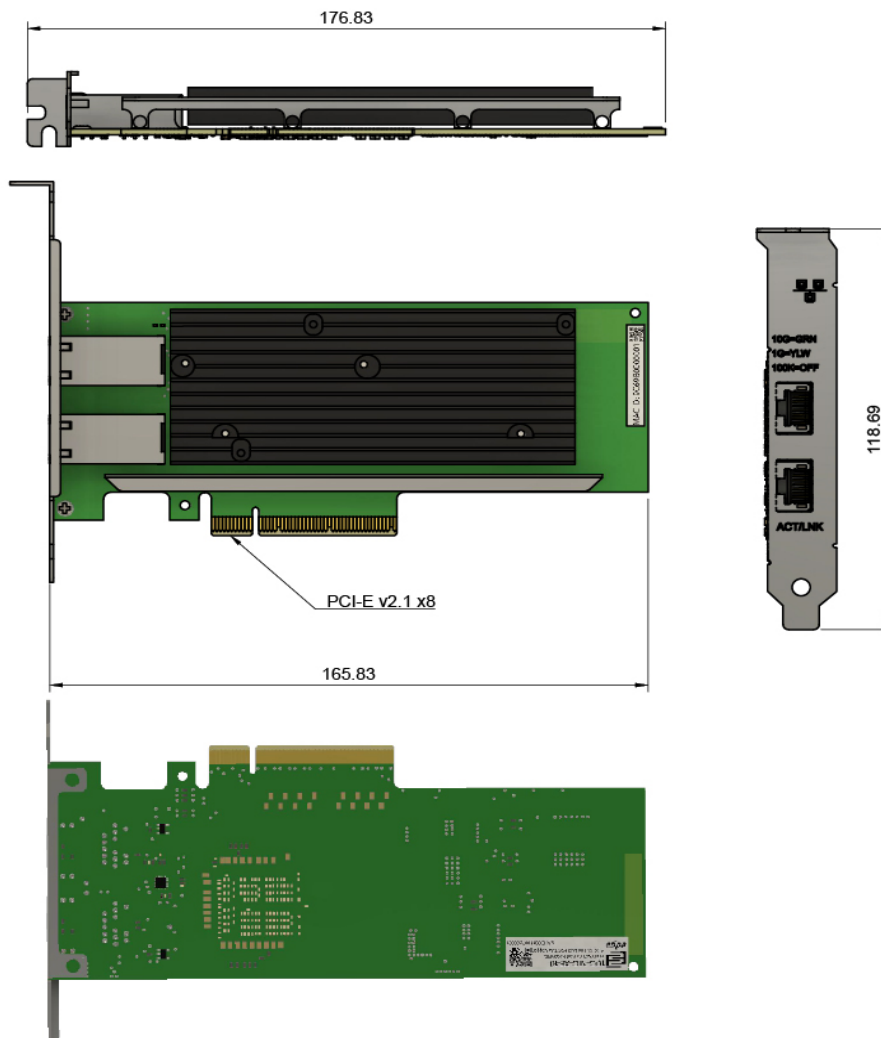


## Product Specification:

Parameter	Value
Product type:	Network Interface Cards
NIC Category:	Dual Port 10G Copper RJ-45 PCIe
Controller Silicon:	Intel® X540
Controller type:	Ethernet
Connector type:	RJ45
Number of ports:	2
Data rate per port:	10/1GbE and 100Mb
Interconnection Distance:	CAT6 up to 55 m; CAT6A up to 100 m
Bus interface:	PCI-E 2.1 x8
Bus transfer rate:	5GT/s or 2.5GT/s
Unified Networking:	iSCSI, FCoE, NFS
Clock:	Time Sync (IEEE 1588*, 802.1as)
Network Operating Systems (NOS):	<ul style="list-style-type: none"> <li>Windows 32-bit: 7, 8, 8.1, 10</li> <li>Windows 64-bit: 7, 2008 R2, 8, 2012, 8.1, 2012 R2, 10, 2016, 2019</li> <li>Linux: RHEL 6.x/7.x, SUSE 11.x/12.x, Ubuntu 14.x/16.x</li> <li>FreeBSD: 10.x/11.x</li> </ul>
LED Status Indicators:	<ul style="list-style-type: none"> <li>LINK (solid) and ACTIVITY (blinking)</li> <li>LINK SPEED (green=10 G bps; yellow=1 G bps)</li> </ul>
Power:	<ul style="list-style-type: none"> <li>Power consumption (max): 100Mbps 6.6W, 1 Gbps 9.5W, 10 Gbps 17.4W</li> <li>Operating voltage: 3.3V and 12V</li> </ul>
Environmental Specifications:	<ul style="list-style-type: none"> <li>Operating temperature: 0 °C to 55 °C</li> <li>Air Flow Minimum of 200 LFM required</li> <li>Storage temperature: -40 °C to 70 °C</li> <li>Relative Humidity: 5% to 90% (non-condensing)</li> </ul>
Physical Characteristics:	<ul style="list-style-type: none"> <li>Dimensions (W x H): 146mm x 69mm</li> <li>Ships with low-profile bracket attached to interface card. Standard bracket included in packaging.</li> </ul>
I/O, Virtualization, Manageability and Advanced Software Features:	As per NIC controller
Compliance:	CE, FCC, ROHS



## Mechanical Dimensions:



## Compatibility:

EDGE Optic 10G-NIC-X540-2T can be used as a compatible alternative for many Network Interface Cards which are manufactured by Intel, HPE, Dell, Lenovo, IBM, Cisco, Broadcom, Marvel, Qlogic, Emulex, Mellanox, Supermicro, Allied Telesis, Chelsio, Dlink, Silicom, Solarflare, Startech and others brands. If Network Interface Card from these brands use same Intel® X540 Controller, EDGE Optic 10G-NIC-X540-2T Card is 100% compatible alternative. Additionally if other manufacturer Network Interface Card has similar main technical characteristics, 10G-NIC-X540-2T can be used as a compatible alternative.

For any questions will 10G-NIC-X540-2T be compatible with your server or will it work as 100% alternative for your current Network Interface Card please write us to: [sales@edgeoptic.com](mailto:sales@edgeoptic.com)



## Drivers:

10G-NIC-X540-2T card use Intel® X540 Controller. Before using please acquire latest Intel® Ethernet Adapter Complete Driver Pack. Please follow this link to do so: <https://downloadcenter.intel.com/download/22283/-?product=83967>

## Warranty:

EDGE Optic's provides a limited warranty for **sixty (60)** months from Purchaser's receipt of the Equipment represented in this data sheet against defective design or workmanship.

