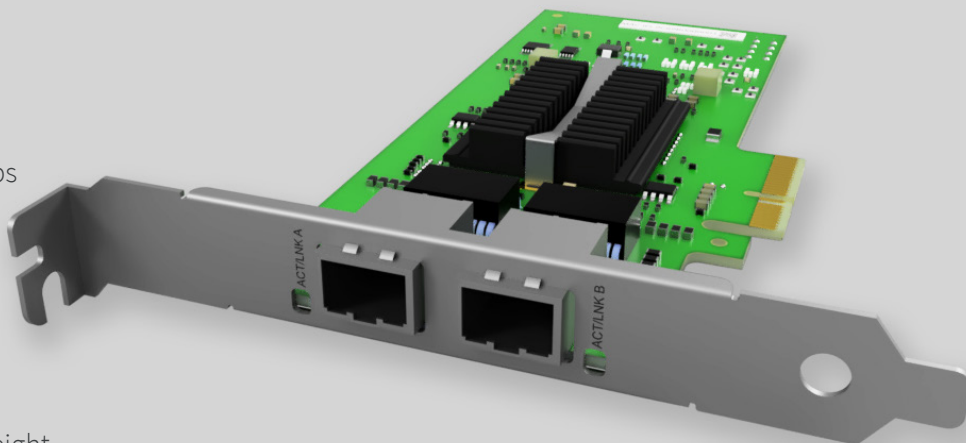


Key Highlights:

- **NIC Category:** Dual Port 1G Copper RJ-45
PCIe
- **Controller:** Intel® 82576
- **System Interface Type:** PCIe v2.0 x4
(2.5GT/s)
- **Ports:** 2x1G RJ-45
- **Data rate per port:** 10/100/1000 Mbps
- **Network Operating Systems (NOS):**
Windows, Linux, FreeBSD
- **Management features:** 1588, SNMP,
RMON, iSCSI boot
- **Cables support:** RJ-45 CAT5 (100m)
- **Bracket Height:** Low Profile & Full Height



Network Interface Card: 1G-NIC-82576-2T

Product Description:

EDGE Optic 1G-NIC-82576-2T is Dual Port 1 Gigabit Ethernet Copper RJ-45 PCI-Express Network Interface Card, which is based on Intel® 82576 Chipset.

1G-NIC-82576-2T is compact card with low power requirements that offer two fully-integrated Gigabit Ethernet Media Access Control (MAC) and Physical Layer (PHY) ports.

1G-NIC-82576-2T can run on most network operating systems and can be used as a compatible alternative for Intel, HPE, Dell, Lenovo, IBM, Cisco, Broadcom, Marvel, Qlogic, Emulex, Mellanox, Supermicro and many other brand Network Interface Cards.

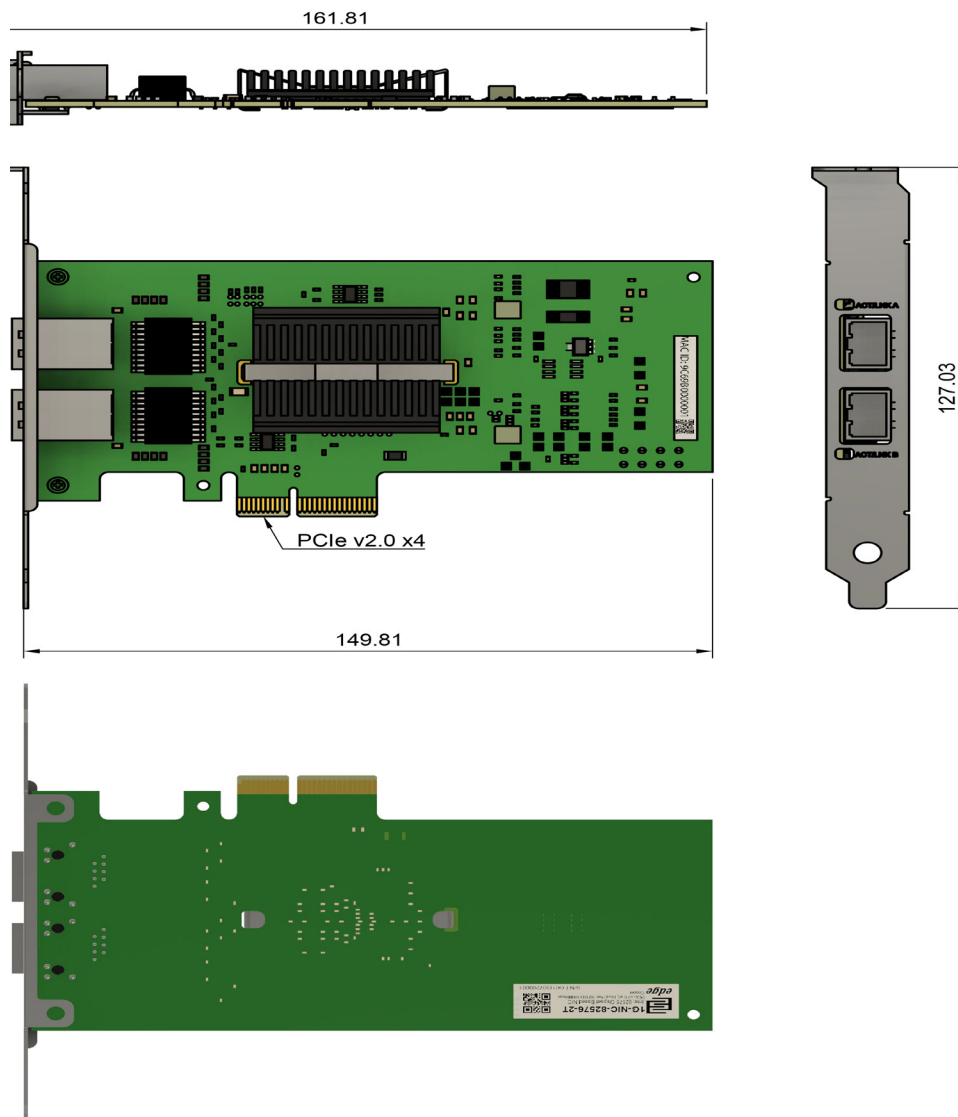


Product Specification:

Parameter	Value
Product type:	Network Interface Cards
NIC Category:	Dual Port 1G Copper RJ-45 PCIe
Controller:	Intel® 82576
Controller type:	Ethernet
Connector type:	RJ45
Number of ports:	2
Data rate per port:	10/100/1000 Mbps
Interconnection Distance:	CAT5 up to 100m
Bus interface:	PCIe v2.0 x4
Bus transfer rate:	2.5GT/s
Management features:	1588, SNMP, RMON, iSCSI boot
Network Operating Systems (NOS):	<ul style="list-style-type: none"> Windows 64-bit: 2012, 2012 R2, 2016, 2019 Linux: RHEL 6.x/7.x, SUSE 11.x/12.x, Ubuntu 14.x/16.x FreeBSD: 10.x/11.x
LED Status Indicators:	<ul style="list-style-type: none"> Off=10 Mb/s; Green= 100Mb/s; Amber= 1 Gb/s
Power:	<ul style="list-style-type: none"> Power consumption (max): 2.8W Operating voltage: 3.3V and 12V
Environmental Specifications:	<ul style="list-style-type: none"> Operating temperature: 0 °C to 55 °C Storage temperature: -40 °C to 70 °C Relative Humidity: 5% to 90% (non-condensing)
Physical Characteristics:	<ul style="list-style-type: none"> Dimensions (W x H): 146mm x 69mm Ships with low-profile bracket attached to interface card. Standard bracket included in packaging.
I/O, Virtualization, Manageability and Advanced Software Features:	As per NIC controller
Compliance:	CE, FCC, ROHS



Mechanical Dimensions:



Compatibility:

EDGE Optic 1G-NIC-82576-2T can be used as a compatible alternative for many Network Interface Cards which are manufactured by Intel, HPE, Dell, Lenovo, IBM, Cisco, Broadcom, Marvel, Qlogic, Emulex, Mellanox, Supermicro, Allied Telesis, Chelsio, Dlink, Silicom, Solarflare, Startech and others brands.

If Network Interface Card from these brands use same Intel® 82576 Controller, EDGE Optic 1G-NIC-82576-2T Card is 100% compatible alternative. Additionally if other manufacturer Network Interface Card has similar main technical characteristics, 1G-NIC-82576-2T can be used as a compatible alternative.

For any questions will 1G-NIC-82576-2T be compatible with your server or will it work as 100% alternative for your current Network Interface Card please write us to: sales@edgeoptic.com



Drivers:

1G-NIC-82576-2T card use Intel® 82576 Controller. Before using please acquire latest Intel® Ethernet Adapter Complete Driver Pack. Please follow this link to do so: <https://downloadcenter.intel.com>

Warranty:

EDGE Optic's provides a limited warranty for **sixty (60)** months from Purchaser's receipt of the Equipment represented in this data sheet against defective design or workmanship.

