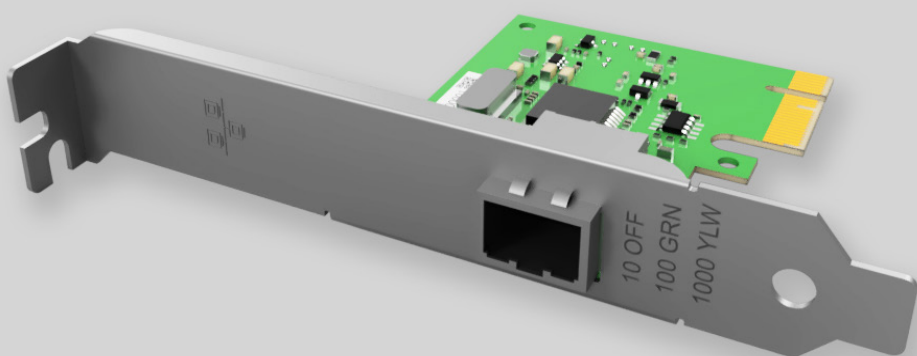


Key Highlights:

- **NIC Category:** Single Port 1G Copper RJ-45 PCIe
- **Controller:** Intel® I210
- **System Interface Type:** PCIe v2.1 x1 (2.5GT/s)
- **Ports:** 1x1G RJ-45
- **Data rate per port:** 10/100/1000 Mbps
- **Network Operating Systems (NOS):** Windows 32-bit/64-bit, Linux, FreeBSD
- **Management:** Intel® PROSet Utility
- **Unified Networking:** iSCSI, NFS
- **Cables support:** RJ-45 CAT 5 (100m)
- **Bracket Height:** Low Profile & Full Height



Network Interface Card: 1G-NIC-I210-1T

Product Description:

EDGE Optic 1G-NIC-I210-1T is Single Port 1 Gigabit Ethernet Copper RJ-45 PCI-Express Network Interface Card, which is based on Intel® I210 Chipset. 1G-NIC-I210-1T card supports innovative power management features such as Energy Efficient Ethernet (EEE) which help to save up to 50% power during low network activity and DMA Coalescing (DMAC) which help to reduce power even more by coalescing, aligning, and synchronizing DMA. 1G-NIC-I210-1T cards chipset support Audio-Video Bridging (AVB), support 802.1Qav and Intelligent Offloads.

1G-NIC-I210-1T can run on most network operating systems and can be used as a compatible alternative for Intel, HPE, Dell, Lenovo, IBM, Cisco, Broadcom, Marvel, Qlogic, Emulex, Mellanox, Supermicro and many other brand Network Interface Cards.

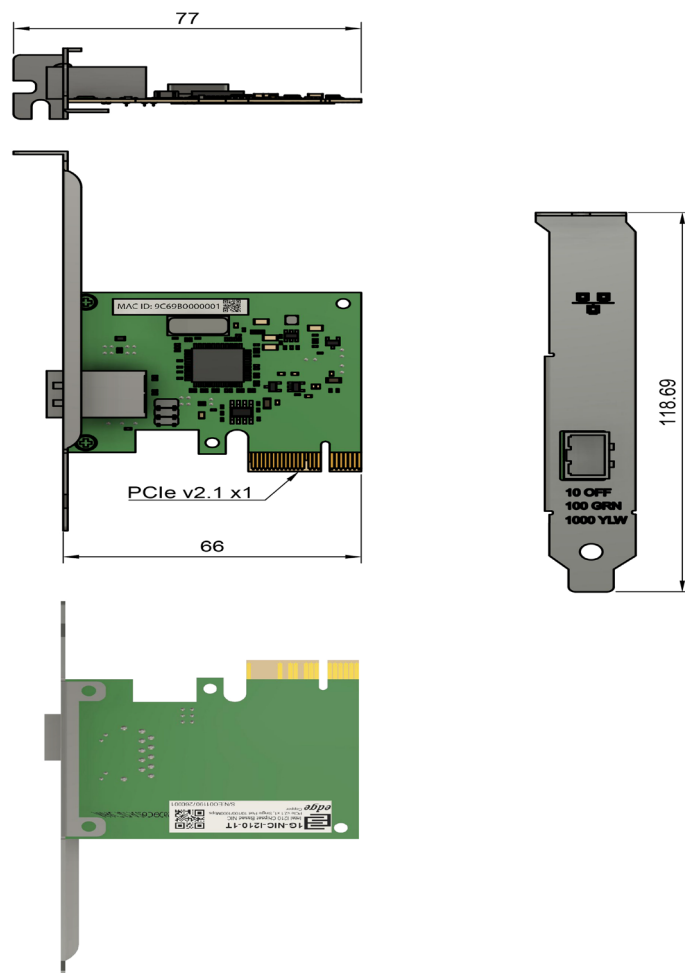


Product Specification:

Parameter	Value
Product type:	Network Interface Cards
NIC Category:	Single Port 1G Copper RJ-45 PCIe
Controller Silicon:	Intel® I210
Controller type:	Ethernet
Connector type:	RJ45
Number of ports:	1
Data rate per port:	10/100/1000 Mbps
Interconnection Distance:	CAT5 up to 100m
Bus interface:	PCIe v2.1 x4
Bus transfer rate:	2.5GT/s
Unified Networking:	iSCSI, NFS
Network Operating Systems (NOS):	<ul style="list-style-type: none"> Windows 32-bit: 7, 8, 8.1, 10 Windows 64-bit: 7, 2008 R2, 8, 2012, 8.1, 2012 R2, 10, 2016, 2019 Linux: RHEL 6.x/7.x, SUSE 11.x/12.x, Ubuntu 14.x/16.x FreeBSD: 10.x/11.x
LED Status Indicators:	<ul style="list-style-type: none"> Off=10 Mb/s; Green= 100Mb/s; Amber= 1 Gb/s
Power:	<ul style="list-style-type: none"> Power consumption (max): 5W Operating voltage: 3.3V and 12V
Environmental Specifications:	<ul style="list-style-type: none"> Operating temperature: 0 °C to 55 °C Storage temperature: -40 °C to 70 °C Relative Humidity: 5% to 90% (non-condensing)
Physical Characteristics:	<ul style="list-style-type: none"> Dimensions (W x H): 146mm x 69mm Ships with low-profile bracket attached to interface card. Standard bracket included in packaging.
I/O, Virtualization, Manageability and Advanced Software Features:	As per NIC controller
Compliance:	CE, FCC, ROHS



Mechanical Dimensions:



Compatibility:

EDGE Optic 1G-NIC-I210-1T can be used as a compatible alternative for many Network Interface Cards which are manufactured by Intel, HPE, Dell, Lenovo, IBM, Cisco, Broadcom, Marvel, Qlogic, Emulex, Mellanox, Supermicro, Allied Telesis, Chelsio, Dlink, Silicom, Solarflare, Startech and others brands.

If Network Interface Card from these brands use same Intel® I210 Controller, EDGE Optic 1G-NIC-I210-1T Card is 100% compatible alternative. Additionally if other manufacturer Network Interface Card has similar main technical characteristics, 1G-NIC-I210-1T can be used as a compatible alternative.

For any questions will 1G-NIC-I210-1T be compatible with your server or will it work as 100% alternative for your current Network Interface Card please write us to: sales@edgeoptic.com



Drivers:

1G-NIC-I210-1T card use Intel® I210 Controller. Before using please acquire latest Intel® Ethernet Adapter Complete Driver Pack. Please follow this link to do so: <https://downloadcenter.intel.com/download>

Warranty:

EDGE Optic's provides a limited warranty for **sixty (60)** months from Purchaser's receipt of the Equipment represented in this data sheet against defective design or workmanship.

