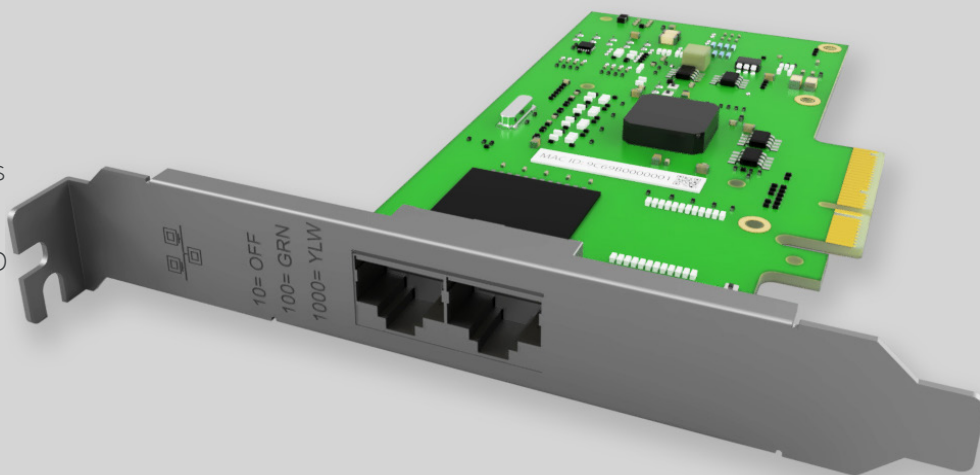


## Key Highlights:

- **NIC Category:** Dual Port 1G Copper RJ-45 PCIe
- **Controller:** Intel® I350
- **System Interface Type:** PCIe v2.1 x4 (5GT/s or 2.5GT/s)
- **Ports:** 2x1G RJ-45
- **Data rate per port:** 10/100/1000 Mbps
- **Network Operating Systems (NOS):** Windows 32-bit/64-bit, Linux, FreeBSD
- **Management:** Intel® PROSet Utility
- **Unified Networking:** iSCSI, NFS
- **Cables support:** RJ-45 CAT 5 (100m)
- **Bracket Height:** Low Profile & Full Height



## Network Interface Card: 1G-NIC-I350-2T

### Product Description:

EDGE Optic 1G-NIC-I350-2T is Dual Port 1 Gigabit Ethernet Copper RJ-45 PCI-Express Network Interface Card, which is based on Intel® I350 Chipset.

1G-NIC-I350-2T card supports innovative power management features such as Energy Efficient Ethernet (EEE) which help to save up to 50% power during low network activity and DMA Coalescing (DMAC) which help to reduce power even more by coalescing, aligning, and synchronizing DMA. 1G-NIC-I350-2T cards chipset supports leading I/O virtualization features, several options for remote boot and wide manageability features.

1G-NIC-I350-2T can run on most network operating systems and can be used as a compatible alternative for Intel, HPE, Dell, Lenovo, IBM, Cisco, Broadcom, Marvel, Qlogic, Emulex, Mellanox, Supermicro and many other brand Network Interface Cards.

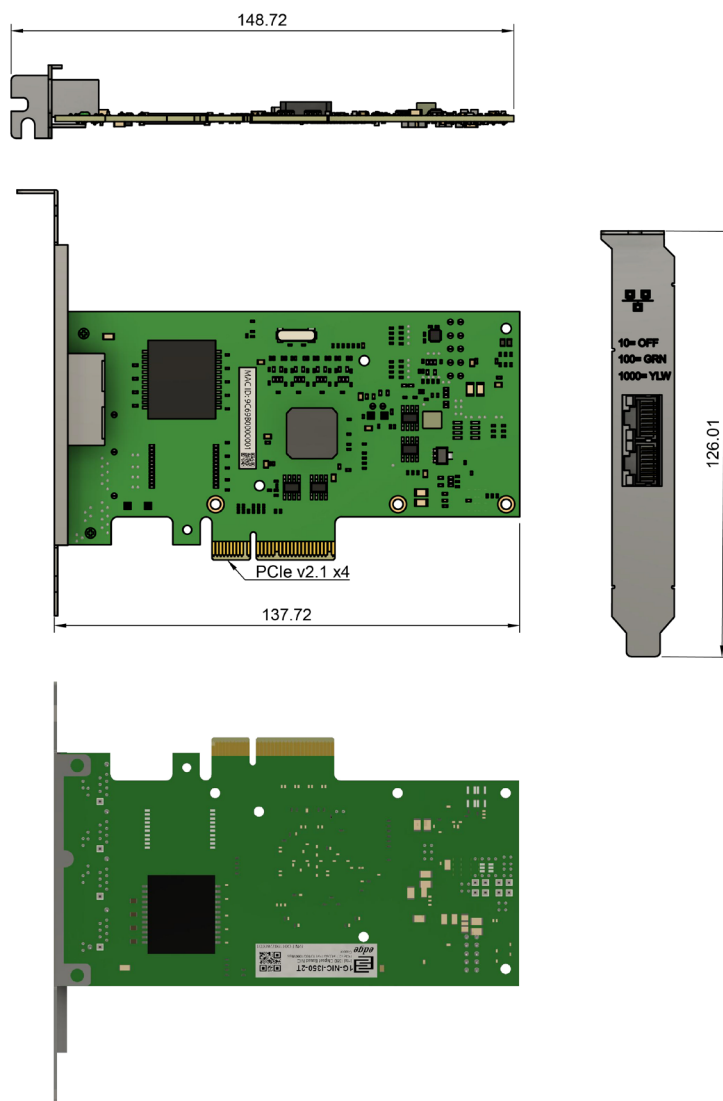


## Product Specification:

Parameter	Value
Product type:	Network Interface Cards
NIC Category:	Dual Port 1G Copper RJ-45 PCIe
Controller Silicon:	Intel® I350
Controller type:	Ethernet
Connector type:	RJ45
Number of ports:	2
Data rate per port:	10/100/1000 Mbps
Interconnection Distance:	CAT5 up to 100m
Bus interface:	PCIe v2.1 x4
Bus transfer rate:	5GT/s or 2.5GT/s
Unified Networking:	iSCSI, NFS
Network Operating Systems (NOS):	<ul style="list-style-type: none"> <li>Windows 32-bit: 7, 8, 8.1, 10</li> <li>Windows 64-bit: 7, 2008 R2, 8, 2012, 8.1, 2012 R2, 10, 2016, 2019</li> <li>Linux: RHEL 6.x/7.x, SUSE 11.x/12.x, Ubuntu 14.x/16.x</li> <li>FreeBSD: 10.x/11.x</li> </ul>
LED Status Indicators:	<ul style="list-style-type: none"> <li>Off=10 Mb/s; Green= 100Mb/s; Amber= 1 Gb/s</li> </ul>
Power:	<ul style="list-style-type: none"> <li>Power consumption (max): 2.8W</li> <li>Operating voltage: 3.3V and 12V</li> </ul>
Environmental Specifications:	<ul style="list-style-type: none"> <li>Operating temperature: 0 °C to 55 °C</li> <li>Storage temperature: -40 °C to 70 °C</li> <li>Relative Humidity: 5% to 90% (non-condensing)</li> </ul>
Physical Characteristics:	<ul style="list-style-type: none"> <li>Dimensions (W x H): 146mm x 69mm</li> <li>Ships with low-profile bracket attached to interface card. Standard bracket included in packaging.</li> </ul>
I/O, Virtualization, Manageability and Advanced Software Features:	As per NIC controller
Compliance:	CE, FCC, ROHS



## Mechanical Dimensions:



## Compatibility:

EDGE Optic 1G-NIC-I350-2T can be used as a compatible alternative for many Network Interface Cards which are manufactured by Intel, HPE, Dell, Lenovo, IBM, Cisco, Broadcom, Marvel, Qlogic, Emulex, Mellanox, Supermicro, Allied Telesis, Chelsio, Dlink, Silicom, Solarflare, Startech and others brands.

If Network Interface Card from these brands use same Intel® I350 Controller, EDGE Optic 1G-NIC-I350-2T Card is 100% compatible alternative. Additionally if other manufacturer Network Interface Card has similar main technical characteristics, 1G-NIC-I350-2T can be used as a compatible alternative.

For any questions will 1G-NIC-I350-2T be compatible with your server or will it work as 100% alternative for your current Network Interface Card please write us to: [sales@edgeoptic.com](mailto:sales@edgeoptic.com)



## Drivers:

1G-NIC-I350-2T card use Intel® I350 Controller. Before using please acquire latest Intel® Ethernet Adapter Complete Driver Pack. Please follow this link to do so: <https://downloadcenter.intel.com/download>

## Warranty:

EDGE Optic's provides a limited warranty for **sixty (60)** months from Purchaser's receipt of the Equipment represented in this data sheet against defective design or workmanship.

