

# 25G-SFP28-20I

Optical Transceivers



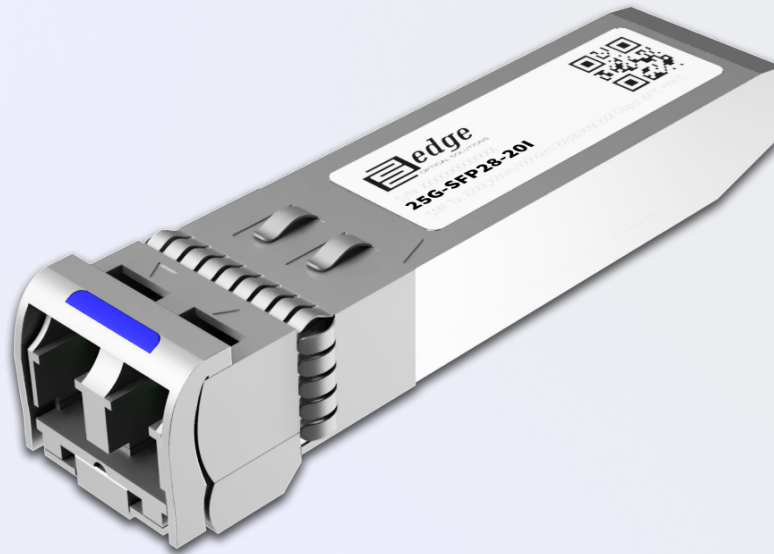
$\lambda = 1310 \text{ nm}$



Fiber Type: OS2 Fiber



Double LC



OB 8 dB



Max 20 km



FEC



$PC \leq 1.2W$

## Product description

25G-SFP28-20I is a 25GBASE-LR 20km Multi-Vendor MSA Compatible SFP28 (Small Form-Factor Pluggable 28) Transceiver, operating over Double Fiber Single-Mode Fiber (SMF) optical cable. It has minimum guaranteed optical budget of 8 dB, which in most cases is enough to reach 20 km over OS2 fiber. However, distance is just indicative parameter for comfort of identification that is calculated by taking into account minimal optical budget and average attenuation of optical cabling in industry. 25G-SFP28-20I uses top quality DML transmitter and 25Gb/s PIN photodiode receiver. 25G-SFP28-20I 25GBASE-LR 20km supports DDM/DOM optical diagnostics, operates in Industrial  $-40^{\circ}\text{C} - +85^{\circ}\text{C}$  temperature range and has Double LC interface. 25G-SFP28-20I 25GBASE-LR 20km SFP28 support 8.5-28.1 Gbps data rate and is designed for 25G Ethernet (25.78 Gbps) and 10G Ethernet (10.31 Gbps) applications. 25G-SFP28-20I 25GBASE-LR 20km SFP28 transceiver is CE/RoHS certified and is compliant with product safety standards. 25G-SFP28-20I is fully compliant to SFF-8431 and SFF-8472 Multi Source Agreement (MSA), IEEE 802.3 by 25 Gb/s specification.

## Product Specification:

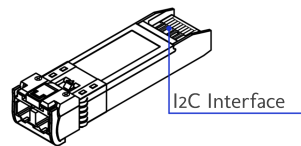
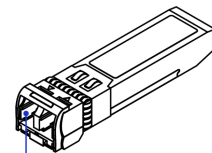
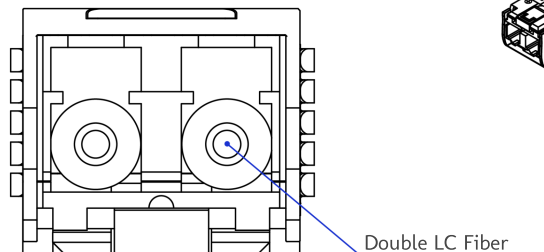
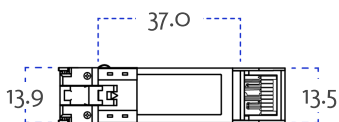
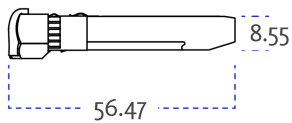
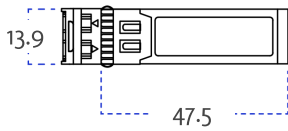
Media Type:	Single-Mode Fiber (SMF)
Connectors:	Double LC
TX Wavelength:	1310 nm
RX Wavelength:	1310 nm
Minimum Optical Budget:	8 dB
Maximum Distance:	20 km
Supported Data Rate:	8.5 - 28.1 Gbps
Supported Applications:	25G Ethernet, 10G Ethernet

# Product Specification:

DDM/DOM:	Supported
Forward Error Correction (FEC):	Host FEC Supported
Transmitter Type:	DML Laser
Tx Wavelength Bandwidth:	40 nm
Average Launch Power (Min) Each Lane:	- 5 dBm
Average Launch Power (Max) Each Lane:	2 dBm
Extinction Ratio (Min):	3.5 dB
Receiver Type:	PIN photodiode
Rx Wavelength Bandwidth:	40 nm
Avg Receiver Sensitivity(Min)Each Lane:	-13 dBm
Avg Receiver Sensitivity(Max)Each Lane:	2 dBm
Receiver Overload:	3 dBm
Temperature Range:	Industrial -40°C - +85°C
Storage Temperature:	-40° to 85°C
Relative Humidity:	0 to 85%
Power Consumption:	≤1.2W
Power:	3.3V
Compliance:	25GBASE-LR, SFF-8472, SFP28 MSA, IEEE 802.3cc, SFF-8431, SFF-8432, CE, RoHS

## Mechanical Dimensions

\*The dimensions are given in millimetres [mm]



## Warranty

EDGE Optic's provides a limited warranty for **sixty (60) months** from Purchaser's receipt of the Equipment represented in this data sheet against defective design or workmanship.



EDGE Technologies Ltd.  
Plienciema Street 33, Marupe,  
Latvia, LV-2167

+371 22084457  
[www.edgeoptic.com](http://www.edgeoptic.com)  
[sales@edgeoptic.com](mailto:sales@edgeoptic.com)

