

800G-OSFP800-12

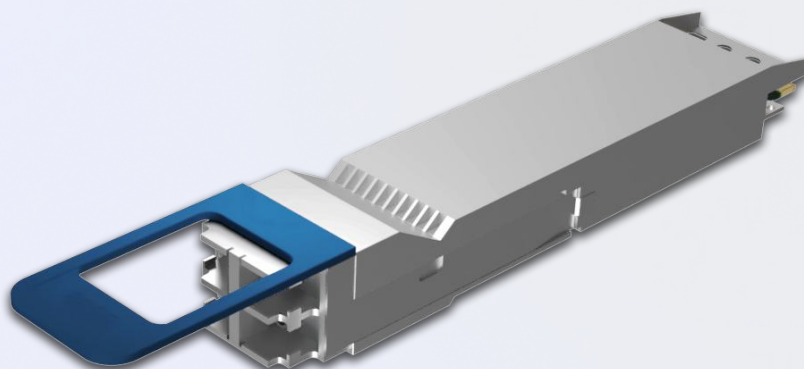
Optical Transceivers


 $\lambda = 4$ CWDM


Fiber Type: OS2 Fiber



Dual Duplex LC



OB 6.3dB



Max 10km (With FEC)



FEC



PC ≤ 14.5W

Product description

800G-OSFP800-12 is an 800G OSFP transceiver module, compatible with Multi-Vendor MSA standards, designed for operation over dual single-mode fiber (SMF). The module supports an 800G electrical host interface and an optical line interface using CWDM EML transmitters and PIN receivers, enabling up to 10km reach over SMF with host FEC enabled. On the transmission side, the module converts 8×106.25Gbps PAM4 electrical input lanes into optical signals across two, 4 CWDM channels (1264.5 – 1337.5 nm) per transmit path. 800G-OSFP800-12 provides a total optical budget of 6.3 dB, average launch power per lane from –2.7 dBm to +5.1 dBm, and receiver sensitivity down to –9 dBm. It supports Digital Diagnostic Monitoring (DDM/DOM), it operates over a 0°C to 70°C case temperature range and has Dual Duplex LC interface. 800G-OSFP800-12 is compliant with OSFP MSA rev5.0, OIF-CMIS rev5.0, IEEE 802.3cu-2021, and IEEE 802.3ck-2021 standards.

The transceiver is RoHS compliant and designed for use in 800G Ethernet applications.

Product Specification:

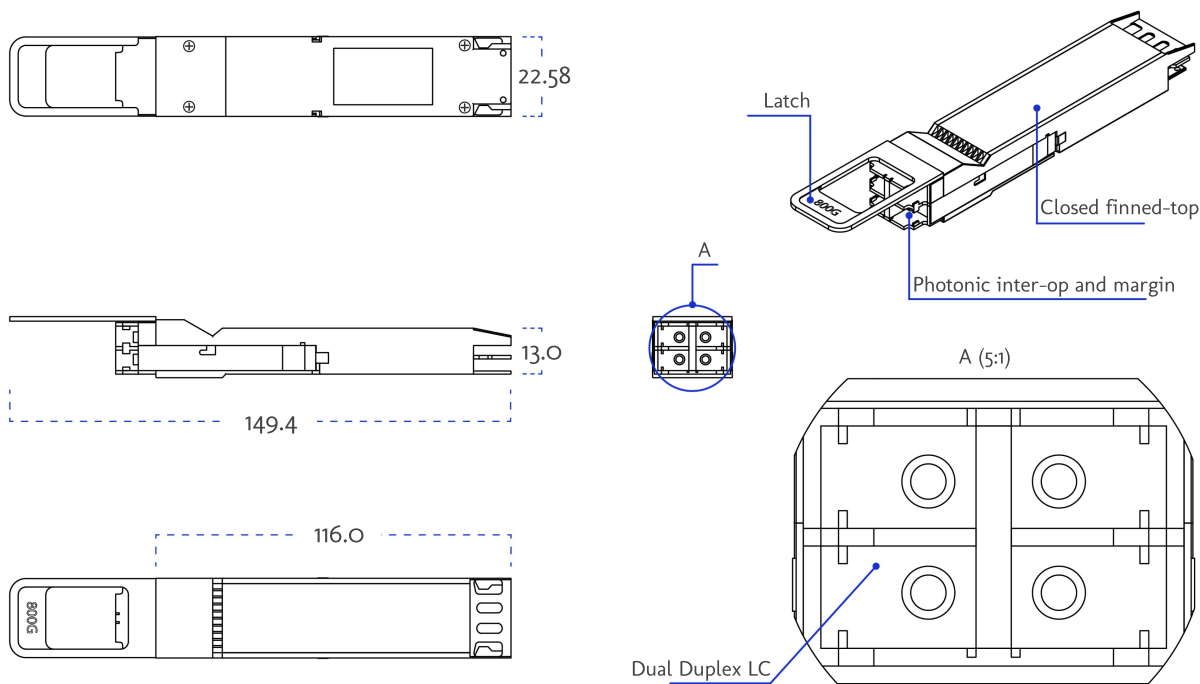
Media Type:	Single-Mode Fibre (SMF)
Connectors:	Dual Duplex LC
TX Wavelength:	1271nm, 1291nm, 1311nm, 1331 nm
RX Wavelength:	1271nm, 1291nm, 1311nm, 1331 nm
Minimum Optical Budget:	6.3 dB
Maximum Distance:	10km (With Host FEC)
Supported Data Rate:	850Gbps

Product Specification:

Supported Applications:	800G Ethernet
DDM/DOM:	Supported
Forward Error Correction (FEC):	Host FEC supported
Transmitter Type:	EML Laser
Tx Wavelength Bandwidth:	20 nm
Average Launch Power (Min) Each Lane:	-2.7 dBm
Average Launch Power (Max) Each Lane:	5.1 dBm
Extinction Ratio (Min):	3.5 dB
Receiver Type:	PIN photodiode
Rx Wavelength Bandwidth:	20 nm
Avg Receiver Sensitivity(Min)Each Lane:	-9 dBm
Avg Receiver Sensitivity(Max)Each Lane:	5.1 dBm
Receiver Overload:	6.1 dB
Temperature Range:	Standard 0°C to 70°C
Storage Temperature:	-40° to 85°C
Relative Humidity:	5 to 95%
Power Consumption:	≤ 14.5W
Power:	3.3V
Compliance:	OIF-CMIS rev5.0, OSFP MSA rev5.0, IEEE 802.3cu-2021, IEEE 802.3ck-2021, RoHs

Mechanical Dimensions

*The dimensions are given in millimetres [mm]



Warranty

This product is covered by a **repair-only warranty** for a period of **36 months** from the date of purchase. Please note that we are unable to offer returns or exchanges during or after this period. We appreciate your understanding and are committed to supporting you with any repair-related concerns throughout the warranty coverage.



EDGE Technologies Ltd.
Plienciema Street 33, Marupe,
Latvia, LV-2167

+371 27746349
www.edgeoptic.com
sales@edgeoptic.com

