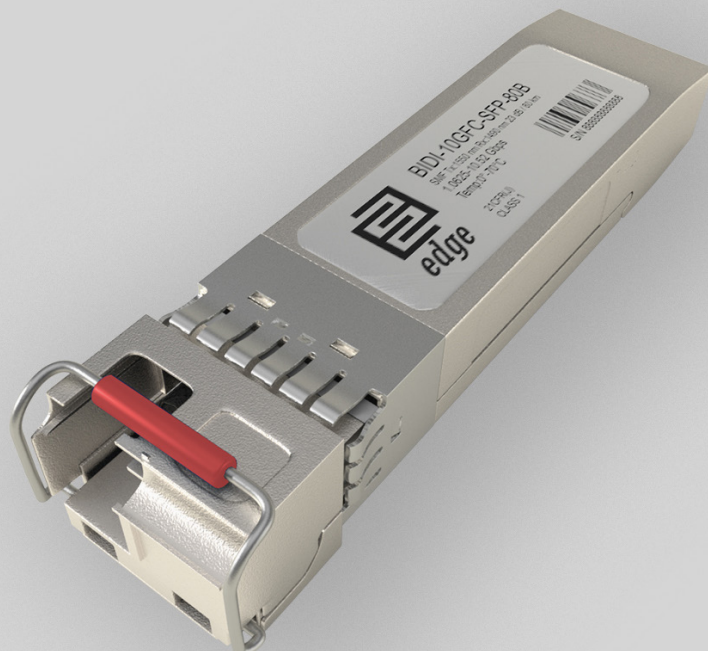


## Key Highlights:

- **Type:** SFP+
- **Compatibility:** Multi-Vendor MSA Compatible
- **Tx Wavelength:** 1550 nm
- **Rx Wavelength:** 1490 nm
- **Media Type:** Single-Mode Fiber (SMF)
- **Optical Budget:** 23 dB
- **Max. Distance:** 80 km
- **Data Rate:** 1.0625-10.52 Gbps
- **Temperature:** Standard 0°-70°C



## Optical Transceiver: BIDI-10GFC-SFP-80B

### Product Description:

BIDI-10GFC-SFP-80B is Multi-Vendor MSA Compatible SFP+ (Small Form factor Pluggable) Transceiver, operating over Single Fiber Single-Mode Fiber (SMF) optical cable. It has minimum guaranteed optical budget of 23 dB, with in most cases is enough to reach about 80 km distance. However, distance is just indicative parameter calculated for comfort of identification. Eventually we calculate distance taking in account minimal optical budget and average attenuation of optical cabling in industry. This transceiver use top quality EML Laser transmitter with operating at nominal wavelength 1550 nm and 1490 nm APD Photodiode receiver. It support DDM/DOM optical diagnostics, with provide diagnostic information about the present operating conditions. BIDI-10GFC-SFP-80B operates in Standard 0°-70°C temperature range and has Single LC interface. SFP+ support 1.0625-10.52 Gbps data rate and such applications as 10G Fiber Channel (10.52 Gbps)|8G Fiber Channel (8.5 Gbps)|4G Fiber Channel (4.25 Gbps)|2G Fiber Channel (2.125 Gbps)|1G Fiber Channel (1.0625 Gbps). BIDI-10GFC-SFP-80B SFP+ Single Fiber optical transceiver is multi-purpose module used in number of different places of today's networking. Consequently, most popular applications are Storage Area Networking SAN Applications in Data Centers, Data Center Fiber Channel Interconnections over Backbone, Enterprise Networks SAN Interconnections and other optical links.

Transceiver is CE/RoHS certified and it is Compliant with product safety standards. BIDI-10GFC-SFP-80B SFP+ Transceiver is fully compliant to SFP+ Multi Source Agreement SFF-8431. Consequently, it means that module is compatible with 80% of networking equipment, where is not implemented a special algorithm for protection against third party modules. However – we can provide SFP+ transceiver with custom-encoded firmware in order to make it work almost in any equipment. Therefore, we will be glad to know what your requirement is. Because our focus is providing top quality service, we are performing serious quality checks before delivery of our products. As a result, we do optical parameter measurements, connector cleanness tests and SFP transceiver EEPROM memory data validation tests.



## Product Specification:

Parameter	Value
Media Type:	Single-Mode Fiber (SMF)
Tx Wavelength:	1550 nm
Rx Wavelength:	1490 nm
Minimum Optical Budget:	23 dB
Maximum Distance:	80 km
Supported Data Rate:	1.0625-10.52 Gbps
Supported Applications:	10G Fiber Channel (10.52 Gbps) 8G Fiber Channel (8.5 Gbps) 4G Fiber Channel (4.25 Gbps) 2G Fiber Channel (2.125 Gbps) 1G Fiber Channel (1.0625 Gbps)
DDM/DOM:	Support
Temperature Range:	Standard 0°-70°C
Connectors:	Single LC
Tx Wavelength Bandwidth:	40 nm (1530-1570 nm)
Rx Wavelength Bandwidth:	40 nm (1470-1510 nm)
Minimum Transmitting Power:	0 dB
Maximum Transmitting Power:	7 dB
Receiver Sensitivity:	-23 dBm
Receiver Overload:	-7 dBm
Dispersion:	1600 ps/nm
Transmitter Type:	EML Laser
Receiver Type:	APD Photodiode
Sidemode Suppression Ratio:	35 dB
Max. Receiver Reflectance:	- 12 dB
Power:	+3.3V single power supply
Power Consumption:	350mA
MTBF value at 35 °C:	1'000'000 Hours.
Chip-set:	MAXIM MINDSPEED SEMTECH
Compliance:	CE Class 1 FDA and IEC60825-1 Laser Safety Compliant RoHS SFF-8431 SFP MSA



## Compatibility:

EDGE Optical transceivers can be provided with custom-encoded firmware, in order to provide compatibility with more than 50 vendor brands in data and telecom communications industry:

**MS** - General MSA  
**AD** - ADVA  
**AL** - Alcatel-Lucent  
**AR** - Arista  
**AV** - Avaya  
**BR** - Brocade  
**CN** - Ciena  
**CI** - Cisco  
**DL** - Dell & Force10  
**DK** - D-Link  
**EM** - EMC2  
**ET** - Enterasys

**ER** - Ericsson  
**EX** - Extreme Networks  
**F5** - F5 Networks  
**FO** - Fortinet  
**FU** - Fujitsu  
**H3** - H3C  
**HI** - Hirschmann  
**HP\*** - HP Networking  
**HS\*** - HP Storage  
**HU** - Huawei  
**IB** - IBM  
**IF** - Infinera

**IN** - Intel  
**JU** - Juniper Networks  
**LI** - Linksys  
**ML** - Mellanox  
**ME** - Meraki (Cisco)  
**MT** - MikroTik  
**MO** - Moxa  
**MR** - MRV  
**NG** - Netgear  
**NS** - NSN  
**PA** - Palo Alto Network  
**QL** - Qlogic

**RD** - RAD  
**RU** - Ruijie Networks  
**SM** - Supermicro  
**SY** - Synology  
**TC** - Telco Systems  
**TP** - TP-LINK  
**TN** - Trendnet  
**WG** - WatchGuard  
**ZT** - ZTE  
**XX** - Other

## Warranty:

EDGE Optic's provides a limited **warranty for sixty (60) months** from Purchaser's receipt of the Equipment represented in this data sheet against defective design or workmanship.

