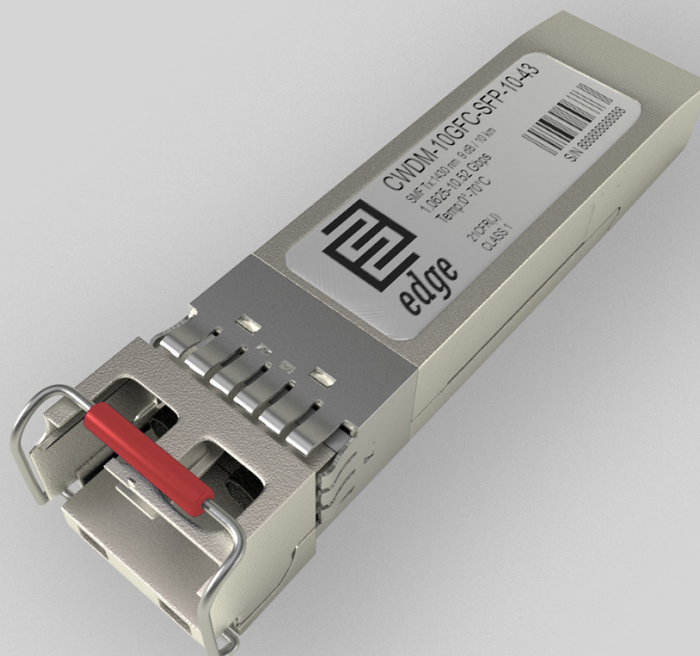


Key Highlights:

- **Type:** SFP+
- **Compatibility:** Multi-Vendor MSA Compatible
- **Tx Wavelength:** 1430 nm
- **Rx Wavelength:** 1270-1610 nm
- **Media Type:** Single-Mode Fiber (SMF)
- **Optical Budget:** 9 dB
- **Max. Distance:** 10 km
- **Data Rate:** 1.0625-10.52 Gbps
- **Temperature:** Standard 0°-70°C



Optical Transceiver: CWDM-10GFC-SFP-10-43

Product Description:

CWDM-10GFC-SFP-10-43 is Multi-Vendor MSA Compatible SFP+ (Small Form factor Pluggable) Transceiver, operating over Double Fiber CWDM Single-Mode Fiber (SMF) optical cable. It has minimum guaranteed optical budget of 9 dB, with in most cases is enough to reach about 10 km distance. However, distance is just indicative parameter calculated for comfort of identification. Eventually we calculate distance taking in account minimal optical budget and average attenuation of optical cabling in industry. This transceiver use top quality DFB Laser transmitter with operating at nominal wavelength 1430 nm and 1270-1610 nm PIN Photodiode receiver. It support DDM/DOM optical diagnostics, with provide diagnostic information about the present operating conditions. CWDM-10GFC-SFP-10-43 operates in Standard 0°-70°C temperature range and has Double LC interface. SFP+ support 1.0625-10.52 Gbps data rate and such applications as 10G Fiber Channel (10.52 Gbps)|8G Fiber Channel (8.5 Gbps)|4G Fiber Channel (4.25 Gbps)|2G Fiber Channel (2.125 Gbps)|1G Fiber Channel (1.0625 Gbps). CWDM-10GFC-SFP-10-43 SFP+ Double Fiber CWDM optical transceiver is multi-purpose module used in number of different places of today's networking. Consequently, most popular applications are Storage Area Networking SAN Applications in Data Centers, Data Center Fiber Channel Interconnections over Backbone, Enterprise Networks SAN Interconnections and other optical links.

Transceiver is CE/RoHS certified and it is Compliant with product safety standards. CWDM-10GFC-SFP-10-43 SFP+ Transceiver is fully compliant to SFP+ Multi Source Agreement SFF-8431. Consequently, it means that module is compatible with 80% of networking equipment, where is not implemented a special algorithm for protection against third party modules. However – we can provide SFP+ transceiver with custom-encoded firmware in order to make it work almost in any equipment. Therefore, we will be glad to know what your requirement is. Because our focus is providing top quality service, we are performing serious quality checks before delivery of our products. As a result, we do optical parameter measurements, connector cleanness tests and SFP transceiver EEPROM memory data validation tests.



Product Specification:

Parameter	Value
Media Type:	Single-Mode Fiber (SMF)
Tx Wavelength:	1430 nm
Rx Wavelength:	1270-1610 nm
Minimum Optical Budget:	9 dB
Maximum Distance:	10 km
Supported Data Rate:	1.0625-10.52 Gbps
Supported Applications:	10G Fiber Channel (10.52 Gbps) 8G Fiber Channel (8.5 Gbps) 4G Fiber Channel (4.25 Gbps) 2G Fiber Channel (2.125 Gbps) 1G Fiber Channel (1.0625 Gbps)
DDM/DOM:	Support
Temperature Range:	Standard 0°-70°C
Connectors:	Double LC
Tx Wavelength Bandwidth:	20nm (1420 - 1440 nm)
Rx Wavelength Bandwidth:	G.694.2 CWDM Grid (1270-1610nm)
Minimum Transmitting Power:	-6 dB
Maximum Transmitting Power:	1 dB
Receiver Sensitivity:	-15 dBm
Receiver Overload:	0.5 dBm
Dispersion:	120-160 ps/nm
Transmitter Type:	DFB Laser
Receiver Type:	PIN Photodiode
Sidemode Suppression Ratio:	35 dB
Max. Receiver Reflectance:	- 12 dB
Power:	+3.3V single power supply
Power Consumption:	220mA
MTBF value at 35 °C:	1'000'000 Hours.
Chip-set:	MAXIM MINDSPEED SEMTECH
Compliance:	CE Class 1 FDA and IEC60825-1 Laser Safety Compliant RoHS SFF-8431 SFP MSA



Compatibility:

EDGE Optical transceivers can be provided with custom-encoded firmware, in order to provide compatibility with more than 50 vendor brands in data and telecom communications industry:

MS - General MSA
AD - ADVA
AL - Alcatel-Lucent
AR - Arista
AV - Avaya
BR - Brocade
CN - Ciena
CI - Cisco
DL - Dell & Force10
DK - D-Link
EM - EMC2
ET - Enterasys

ER - Ericsson
EX - Extreme Networks
F5 - F5 Networks
FO - Fortinet
FU - Fujitsu
H3 - H3C
HI - Hirschmann
HP* - HP Networking
HS* - HP Storage
HU - Huawei
IB - IBM
IF - Infinera

IN - Intel
JU - Juniper Networks
LI - Linksys
ML - Mellanox
ME - Meraki (Cisco)
MT - MikroTik
MO - Moxa
MR - MRV
NG - Netgear
NS - NSN
PA - Palo Alto Network
QL - Qlogic

RD - RAD
RU - Ruijie Networks
SM - Supermicro
SY - Synology
TC - Telco Systems
TP - TP-LINK
TN - Trendnet
WG - WatchGuard
ZT - ZTE
XX - Other

Warranty:

EDGE Optic's provides a limited **warranty for sixty (60) months** from Purchaser's receipt of the Equipment represented in this data sheet against defective design or workmanship.

