

LC/UPC-SC/UPC-OS2-DX-B-LSZH-X

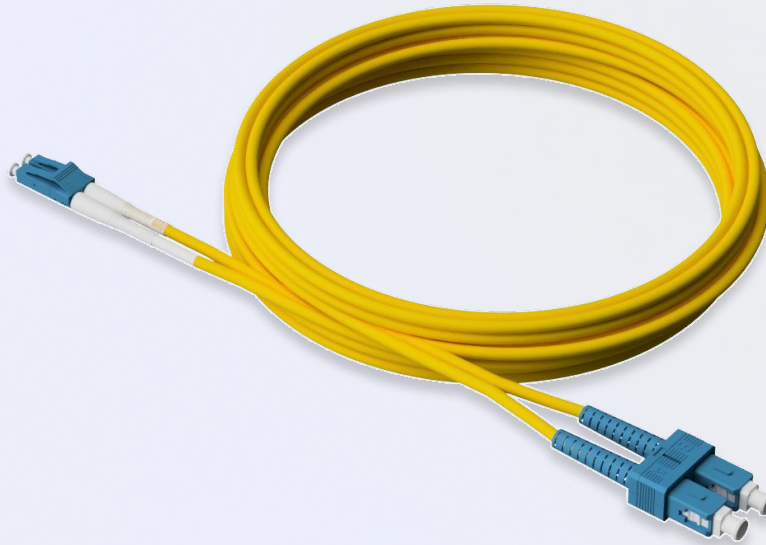
Fiber Optic Patch Cable


Cable length: 1m to 50m


Fiber Type: OS2


Fiber Count: Duplex


Jacket Type: LSZH




LC to SC


Male

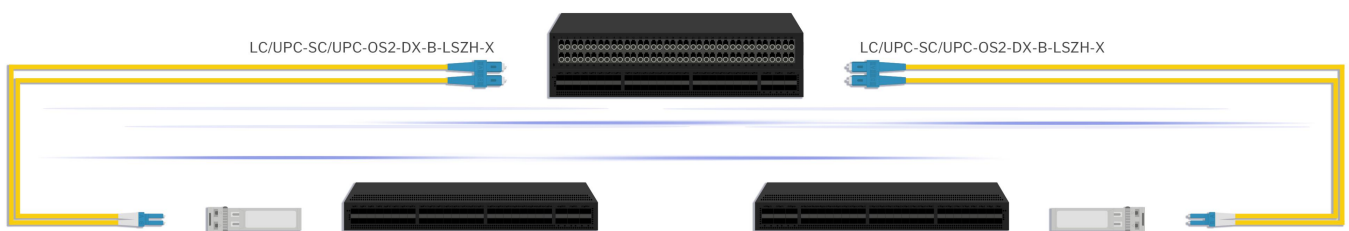

UPC to UPC


Polarity: Type B

Product description

LC/UPC-SC/UPC-OS2-DX-B-LSZH-X is LC Male to SC Male, OS2 Single-mode, Duplex, Type A to B cable available in length from 1 meter to 50 meters. This LC to SC cable use 9/125um single-mode fiber with cable jacket diameter of 2 mm. Cable jacket material is available in Low Smoke Zero Halogen (LSZH). The LSZH cable jacket ensures lower smoke and zero smoke characteristics. The LC/UPC-SC/UPC-OS2-DX-B-LSZH-X cable supports 1310nm and 1550nm wavelengths, and its attenuation at 1310nm is 0.3dB/km and at 1550nm is 0.25dB/km, which ensures best performance at short distances. LC/UPC to SC/UPC patch cable guarantees the best standard grade insertion loss, which is below 0.3dB. Operating temperature is rated to -20°C to 60°C, which suits wide range of environments. LC/UPC-SC/UPC-OS2-DX-B-LSZH-X patch cable is manufactured with Type A to B configuration to support transceiver to transceiver connections. This patch cable is CE/RoHS certified and is compliant with product safety standards. This LC to SC cable is fully compliant to ISO/IEC-61754, EN 50399 and EN 50575 specification. Consequently, compliance to above standards guarantees that LC to SC cable is intermateable with other manufacturer equipment (cables, cassettes, adapters). And as well ensures that cable jacket fully meets its material properties.

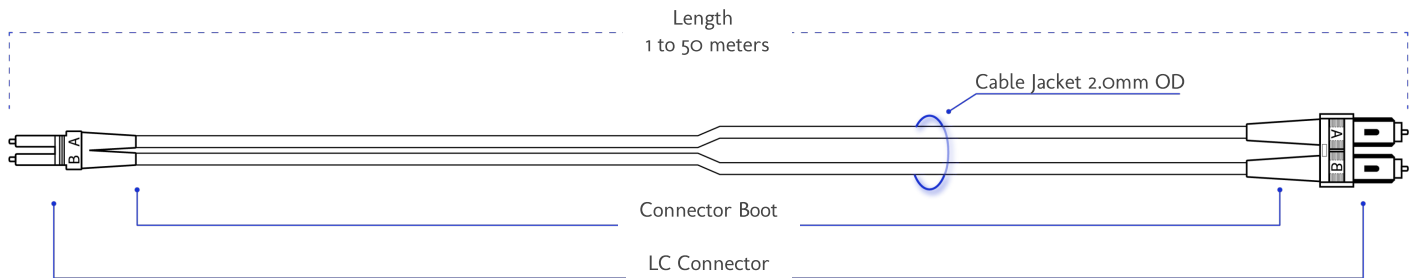
Connectivity



Product Specification:

Connector A:	LC Male	Wavelength:	1310 / 1550 nm
Connector B:	SC Male	Attenuation at 850 nm:	0.3 dB/km
Polarity:	Type B	Attenuation at 1310 nm:	0.25 dB/km
Fiber Type:	OS2 9/125um Single-Mode Fiber (SMF)	Insertion Loss MPO:	0.3 dB
Fiber Count:	Duplex	Storage Temperature:	-20°C to + 60°C
Polish Type:	UPC to UPC	Operating Temperature:	-20°C to + 60°C
Jacket Diameter:	2.0 mm	Minimum Bend Radius:	30 mm
Jacket Type:	LSZH	Color:	Orange
Length:	1 to 50 m		

Mechanical Dimensions



Supported Versions:

SKU	Description
LC/UPC-SC/UPC-OS2-DX-B-LSZH- X *	LC/UPC to SC/UPC, Type A to B, Duplex, OS2 9/125µm, LSZH Patch cable, Length X Meter/s *)

X - cable length in meters

*To inquire about custom lengths, please contact our support team.

Warranty

EDGE Optic's provides a limited warranty for **sixty (60) months** from Purchaser's receipt of the Equipment represented in this data sheet against defective design or workmanship.

