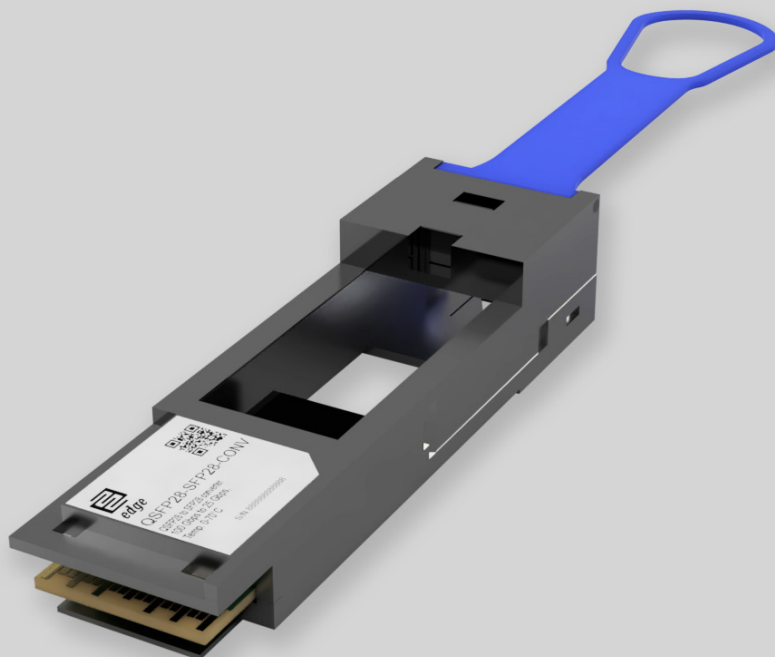


Key Highlights:

- Type: Adapter QSFP28 to SFP28
- Power Consumption: Max: 0.25W
- Compliant to SFP+ MSA, QSFP28 MSA, RoHS, CE
- Tx/Rx Wavelength: As SFP Module
- Media Type: As SFP Module
- Optical Budget: As SFP Module
- Max. Distance: As SFP Module
- Data Rate: 10G to 28G
- Temperature: Standard 0°-70°C
- Hot Pluggable



Adapter Module: QSFP28-SFP28-CONV

Product Description:

EDGE Optics QSFP28 to SFP28 Converter (QSFP28-SFP28-CONV) enables smooth transfer from quad-lane port to single lane optical transceiver. It allows cost-effective migration to 100G Ethernet by providing an option to use lower speed SFP28 or SFP+ modules in empty QSFP28 or QSFP+ port or when there is a necessity for lower speed connection.

100G QSFP28 port can take QSFP+ or QSFP28 optical transceivers. QSFP28 has 4 electrical lanes which can be used as a 4x10GbE or 4x25GbE, but older standard QSFP+ supports 4 electrical lanes, each transmitting per 4x10GbE speed. Equipment with SFP28 port initially supports 1x25GbE, and SFP+ 10GbE capable optics. The rule is to use same or lower speed optical transceiver in port (basing on what port is capable of).

QSFP28 to SFP28 adapter can be plugged directly into equipment which has 100G QSFP28 port, and in adapter we can insert SFP28 transceiver. SFP28 transceiver will transmit using first lane (25Gbps) from all 100G port four lane setup. It is possible also to insert SFP+ (10GbE) transceiver in this adapter, but before doing this it is recommended to check with equipment manufacturer that QSFP28 port supports splitting lanes in to 4x10GbE speeds. SFP+ transceiver in QSFP28 adapter also just like the SFP28 one, will transmit first lane (10GbE).

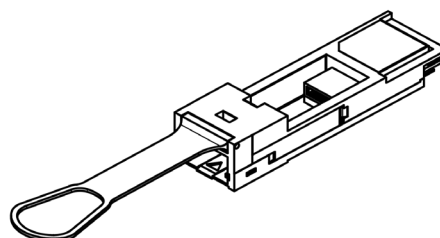
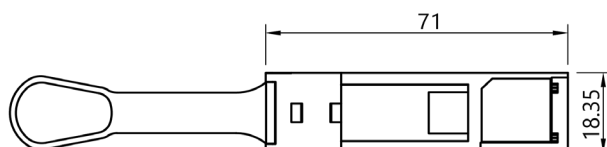
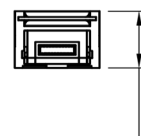
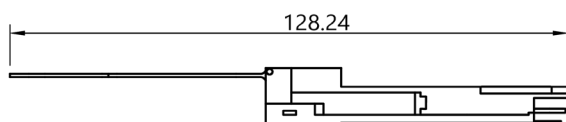
Adapter is CE, RoHS compliant and as well compliant to IEEE-802.3ba and MSA SFF-8431 standard. Most popular use cases for QSFP28 to SFP28 (QSFP28-SFP28-CONV) adapter are in the situation when data-com systems are being upgraded to higher switching capacity equipment. This migration process usually is performed in step by step, node by node manner and sometimes comes to an occurrence when new hardware QSFP28 port is needed to be connected with some older hardware's SFP+ port. We will be glad to hear your requirements – Contact us



Product Specification:

Parameter	Value
Media Type:	As inserted SFP28 Module
Tx Wavelength:	As inserted SFP28 Module
Rx Wavelength:	As inserted SFP28 Module
Minimum Optical Budget:	As inserted SFP28 Module
Supported Data Rate:	10.31 - 25. Gbps
Supported Applications:	25G Ethernet (25.78Gbps), 10G Ethernet (10.31Gbps)
DDM/DOM:	Supported
Temperature Range:	Standard 0 to 70°C
Power:	+3.3V single power supply
Power Consumption:	Max 0.25W
Compliance:	RoHS 6 compliant(lead free), CE, QSFP28 MSA, SFF-8436 SFP+ MSA SFF-8431

Product Drawings:



Warranty:

EDGE Optic's provides a limited **warranty for sixty (60) months** from Purchaser's receipt of the Equipment represented in this data sheet against defective design or workmanship.

